

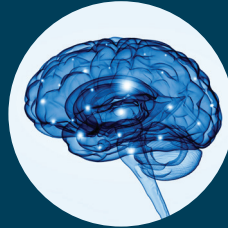


Azrieli National Centre for Autism  
and Neurodevelopment Research

---

# Help Us Improve the Diagnosis and Treatment of Autism Spectrum Disorder

---



## Come and join one of our many studies:

- Genetics research - identification of genetic markers for autism
- Intervention studies, with the participation of parents, to improve social communication and sleep problems
- Development of new technologies for the early detection of autism
- Understanding the relationship between various autism symptoms and sensory sensitivity, sleep problems, and nutrition
- Examining the effectiveness of existing education and care frameworks
- Metabolic studies to identify biological markers of autism in blood and urine samples
- Identifying the needs of family members in dealing with receiving a diagnosis
- Testing the efficacy and safety of drug treatments

The information collected will be used by researchers and doctors from all universities and medical centers in Israel who collaborate on the promotion of methods of diagnosis and treatment of autism and improvement of the quality of life of children with autism and their families.

---

For additional information, please contact:

08-6479527 | [www.autismisrael.org.il](http://www.autismisrael.org.il) | [Autism@post.bgu.ac.il](mailto:Autism@post.bgu.ac.il)

---